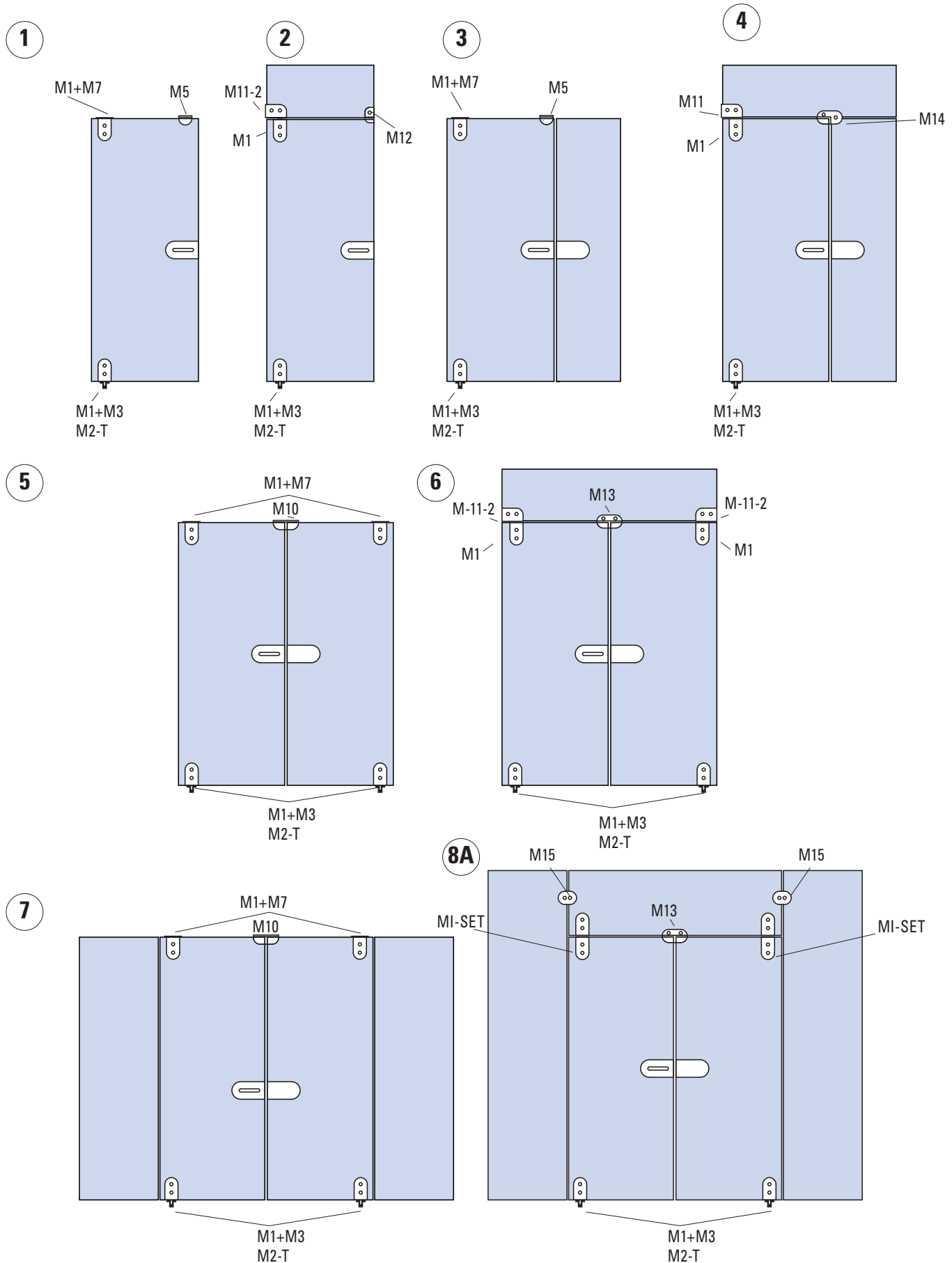


# MODULO TONDO



**TIPOLOGIA DI APPLICAZIONE / APPLICATION TYPOLOGIES / KOMPOSITIONSMÖGLICHKEITEN DES SYSTEM**


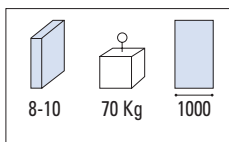
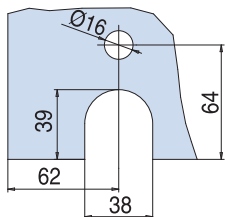
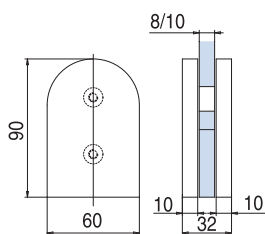




**M1** €▶ G.42

- Cerniera inferiore / superiore.
- Top / bottom patch.
- Oberes / Unteres Pendeltürband.

NS



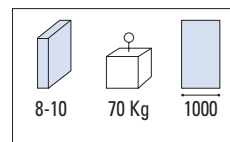
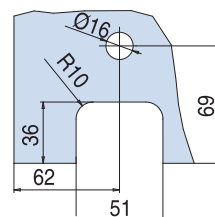
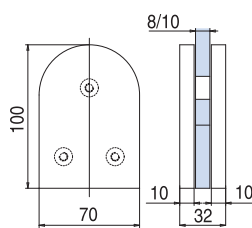
xla76-1



**M2-I** €▶ G.43

- Cerniera inferiore per pompa Italia.
- Bottom pivot hinge for square closer.
- Unteres Pendeltürband für Bodentürschließer mit Vierkant.

NS



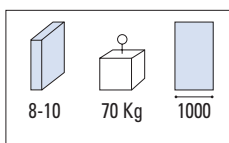
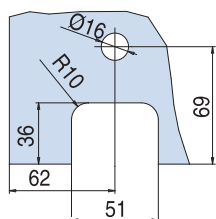
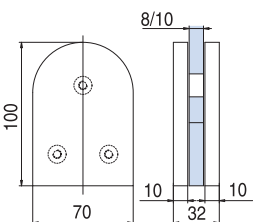
xla76



**M2-T** €▶ G.44

- Cerniera inferiore per pompa Tedesca.
- Bottom pivot hinge for german closer.
- Unteres Pendeltürband für Bodentürschließer mit flachkonischer Achse.

NS



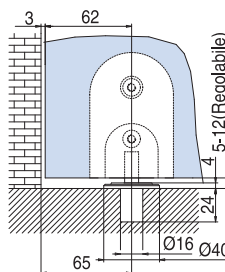
xla76



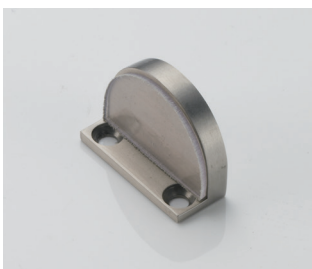
**M3** €▶ G.45

- Pozzetto inferiore con perno regolabile.
- Floor installation bottom pivot ball bearing.
- Bodenbuchse kugelgelagert zum Einlassen in Mauerwerk.

NS



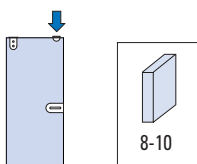
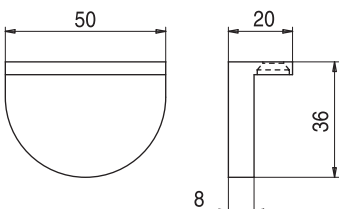
xla77



**M5** €▶ G.47

- Battuta per porta singola.
- Single stop with ceiling installation.
- Anschlag für Deckenbefestigung 1-flg.

NS

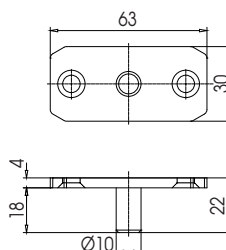


xla78



**MQ-7** €▶ G.46

- Perno superiore rettangolare.
- Rectangular top pin.
- Oberer Zapfen eckig.



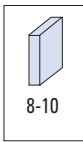
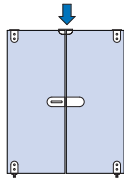
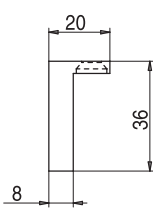
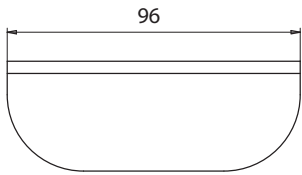
xla268d


**M-10**

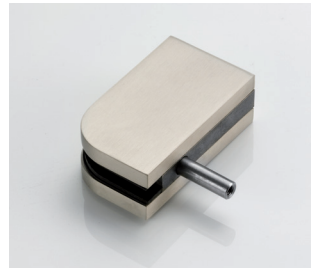
- Battuta per porta doppia.
- Double stop with ceiling installation.
- Anschlag für Deckenbefestigung 2-flg.

NS

▶ G.48



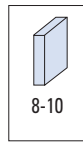
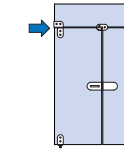
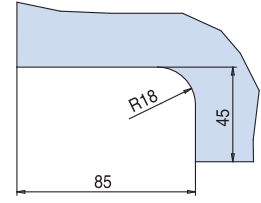
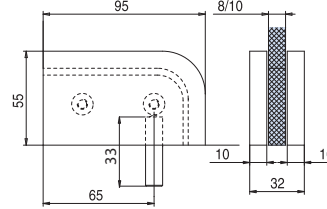
xla78


**M11-R**

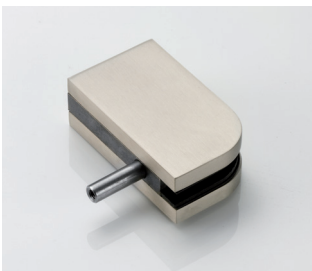
- Cerniera per rotazione laterale con attacco a sopra luce destro.
- Double Link fitting for transom to wall right.
- Kupplung Oberlicht - Wand rechts.

NS

▶ G.55



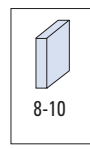
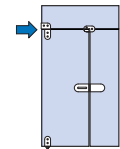
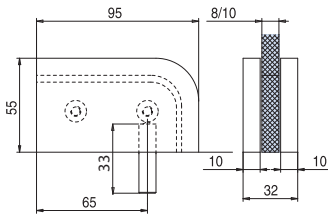
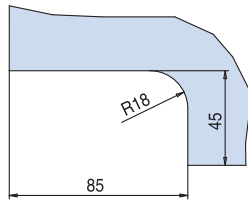
xla81-1


**M11-L**

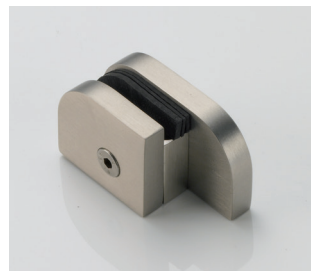
- Cerniera per rotazione laterale con attacco a sopra luce sinistro.
- Link fitting for transom to wall left.
- Kupplung Oberlicht - Wand links.

NS

▶ G.56



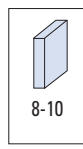
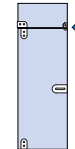
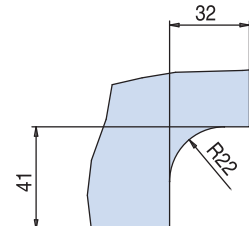
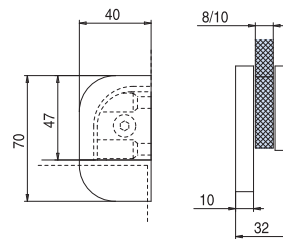
xla81-1


**M12**

- Battuta per porta singola con attacco a sopra luce.
- Stop fixed on overpanel left/right.
- Anschlag fest am Oberlicht links/rechts.

NS

▶ G.57



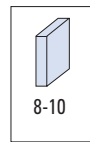
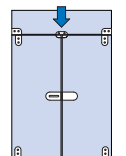
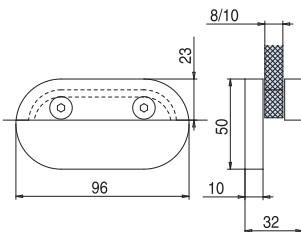
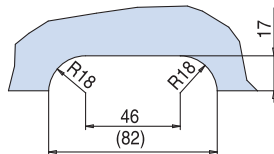
xla81-1


**M13**

- Battuta per porta doppia con attacco per sopra luce.
- Double stop fixed on overpanel.
- Doppelter Anschlag, fest am Oberlicht.

NS

▶ G.52



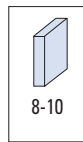
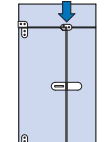
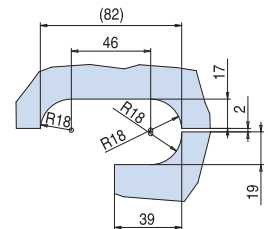
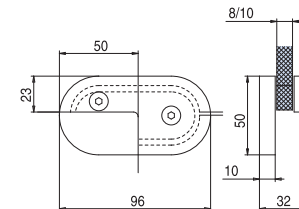
xla80


**M14**

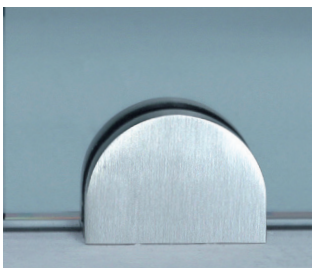
- Battuta per porta singola con attacco a sopra luce e fisso laterale.
- Stop fixed on overpanel and side panel left / right.
- Anschlag fest am Oberlicht und Seitenteil links / rechts.

NS

▶ G.53



xla80-1

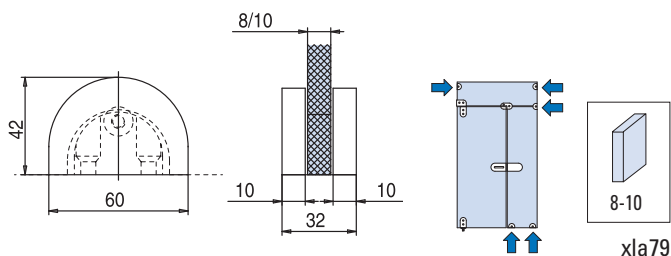


**M9**

- Supporto vetro fisso.
- Wall connector.
- Wandhalter.

NS

€ G.51



xla79

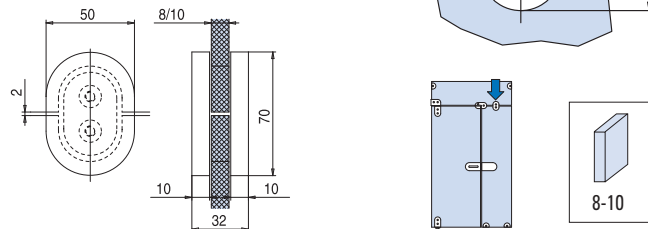


**M15**

- Morsetto per aggancio due vetri.
- Connector glass-glass.
- Verbindungsbeschlag Glas-Glas.

NS

€ G.54



xla79-1

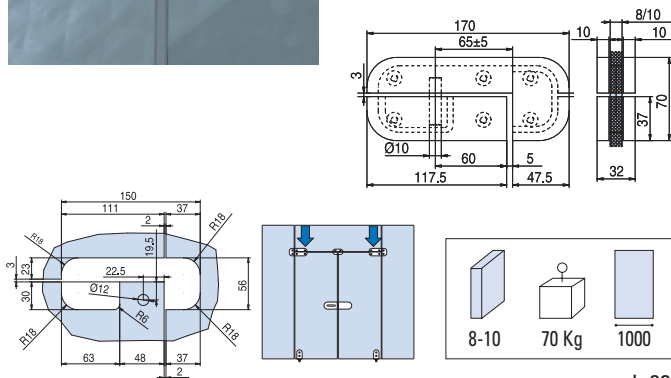


**M16-L**

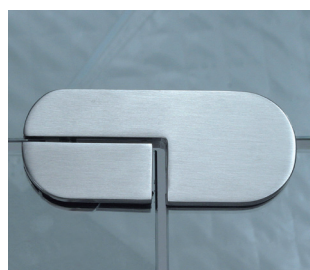
- Cerniera regolabile con attacco a sopraluce e fisso laterale sinistra.
- For overpanel and side panel left.
- Winkeloberlichtbeschlag. Links.

NS

€ G.59



xla82

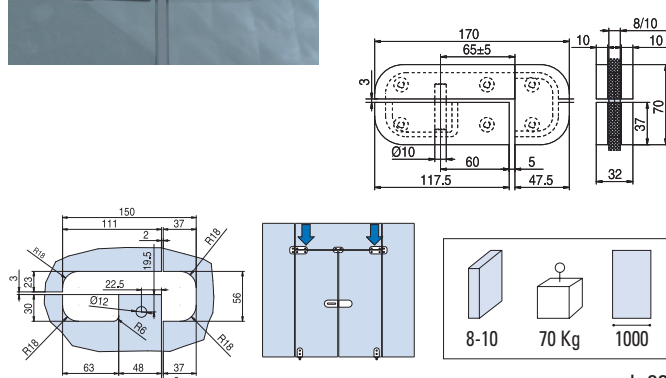


**M16-R**

- Cerniera regolabile con attacco a sopraluce e fisso laterale destra.
- For overpanel and side panel right.
- Winkeloberlichtbeschlag. Rechts.

NS

€ G.58



xla82

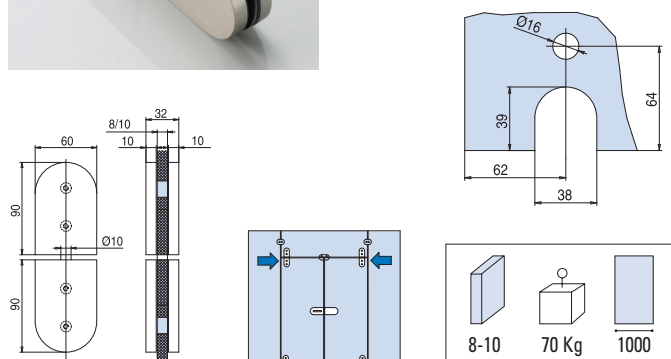


**M1-SET**

- Set Cerniere superiore e sopraluce con perno.
- Overpanel/top pivot set.
- Set Oberes / Oberlicht Pendeltürbänder.

NS

€ G.60



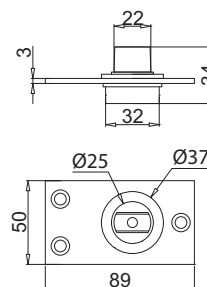
xla82-1



**XT-83 B**

- Perno a pavimento con quadro tedesco ovale.
- Floor pivot with German profile spindle.
- Bodenbuchse mit flachkonischer Achse.

€ G.50



xla82-1

gpe012