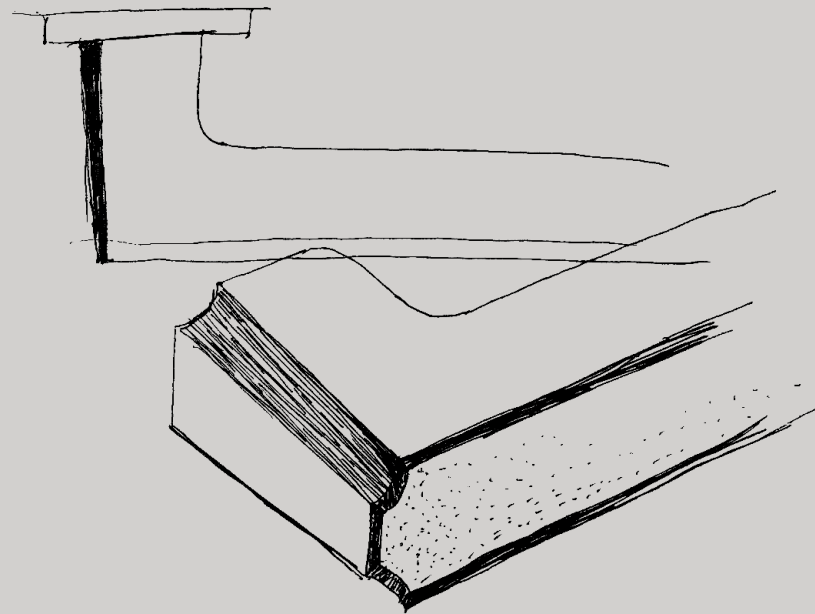


# FRAME

Design by WA+CH



**MANDELLI** 1953

100% MADE IN ITALY

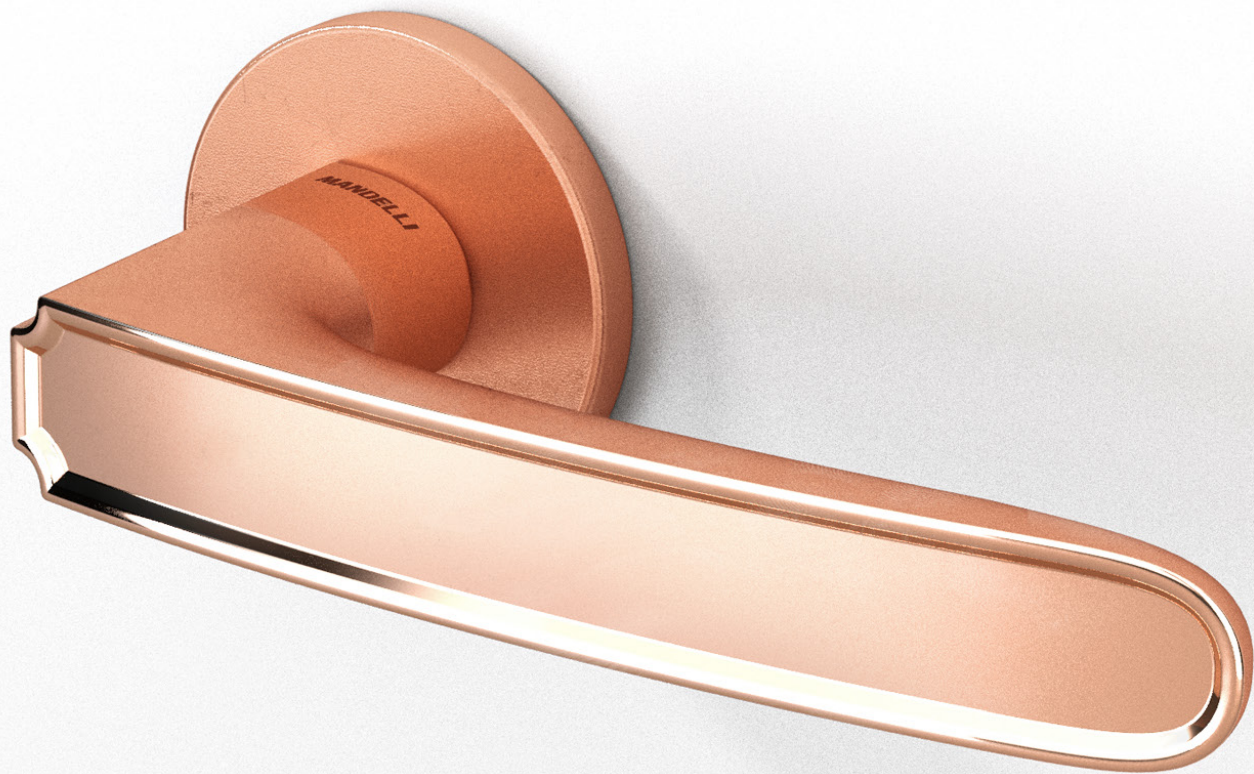
# Eastern Impression



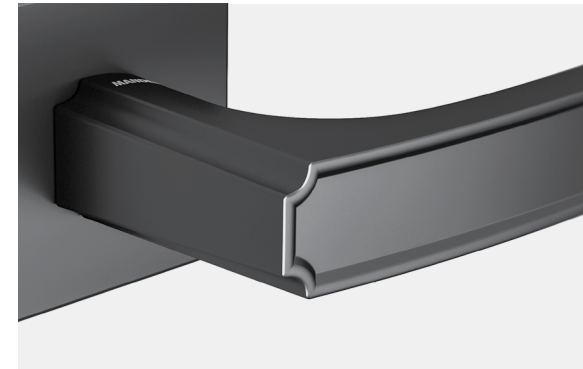
“Frame” si ispira alla decorazione classica cinese di metà secolo, che veniva spesso utilizzata per rifinire le cornici delle finestre, delle porte o come decorazione nei mobili. Abbiamo trasformato questo linguaggio tradizionale del design asiatico in un design contemporaneo che si adatta facilmente allo spazio dando vita all’eleganza dello stile orientale.

“Frame” is inspired by the classical decoration in Mid-century China which frequently used on the edge of windows, doors, or furniture. We transformed this traditional Asian design language into a contemporary design that easily adapts to space and brings the eastern elegant style into life.





# The Elegancy



La sua eleganza deriva dai dettagli dei bordi e delle curve. Tenendola in mano, la forma liscia conduce la mano lungo la sua superficie che massimizza il comfort e l'esperienza ergonomica.

Its elegance comes from the details of each edge and curves. While holding it, the smooth shape leads the hand along its surface that maximizes the comfort and ergonomic experience.

“We create stories that  
contain Eastern culture  
with contemporary aesthetic”

WA+CH, Weichih Chen & Fuhua Wang



# Metal Finishes

Maniglia con rosetta e bocchetta  
Door handle, rose, and keyhole escutcheon



Oro rosa / Oro rosa satinato  
Rosegold / Satin rosegold



Oro / Oro satinato  
Brass / Satin brass



Nero Opaco  
Matt Black



Cromo / Cromo satinato  
Chrome / Satin chrome



mandelli.it

**MANDELLI** 1953  
100% MADE IN ITALY