


# CATALOGUE **X5**


SLIDING DOORS CREATING SPACE[S]





UNIVERSAL SYSTEMS FOR **FRAMELESS DOORS**

 [www.xinnix.eu](http://www.xinnix.eu)

 @xinnixdoorsystems

 xinnix\_door\_systems

 Xinnix Door Systems

 Xinnix Door Systems

 xdoorsystems

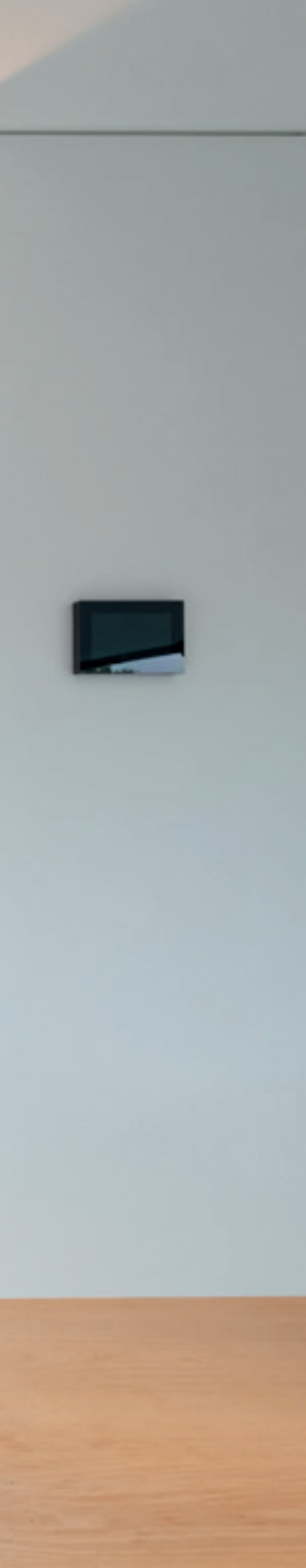


Wall build up	P08
Sliding door types	P10
Finish	P14
Door types	P17
Wall finish	P18
Special solutions	P22
Stock	P24
Accessories	P26



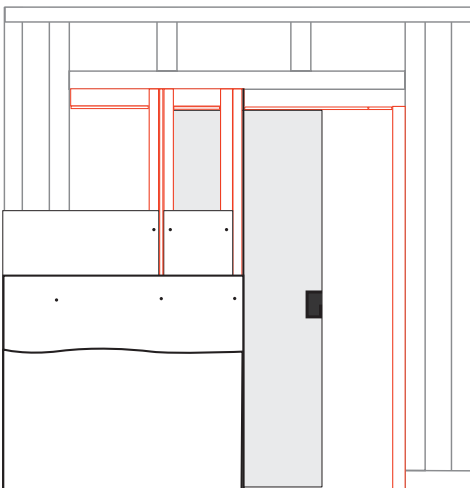




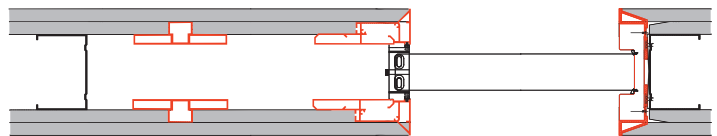


# WALL BUILD UP

## POCKET



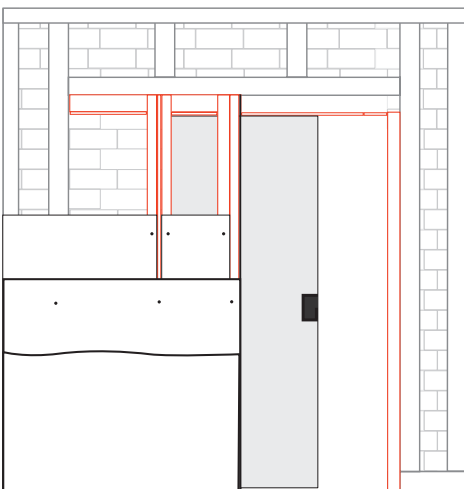
The X5 pocket system allows you to separate two spaces with a pocket sliding door that disappears seamlessly in the wall.



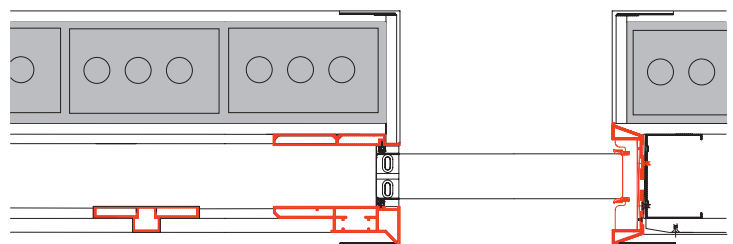


# WALL BUILD UP

## WALL

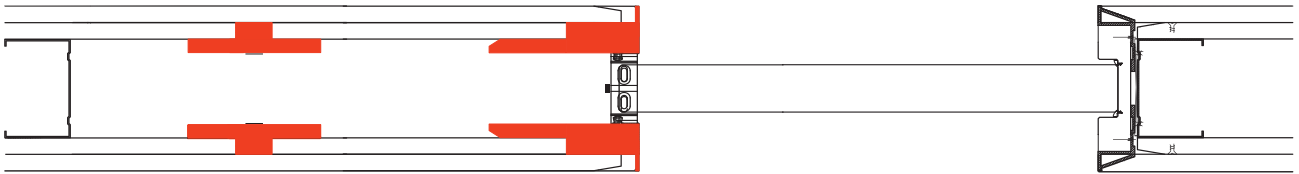


In a renovation where there is already a wall built, our X5 Wall system allows you to make a pocket in which the sliding door disappears.



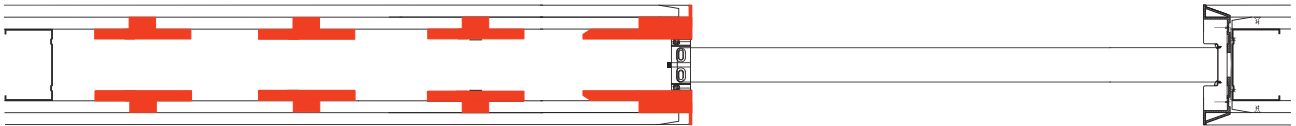
# SLIDING DOOR TYPES

## X5



Our sliding door disappears in a standard wall thickness so both sides of the wall can be used optimally. With our standard items you can create a desired height (up to 3515 mm, 11'5) and width (1230 mm 4').

## X5 XXL



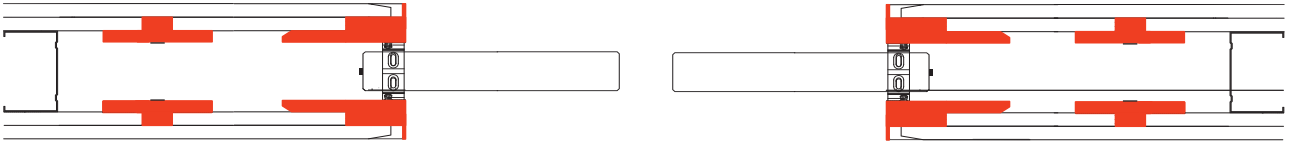
The build up of our X5 XXL consists of the same elements as the standard X5. By using extra sets of uprights a pocket sliding door width of up to 3030 mm, 10' can be realised.

## X5 DOUBLE



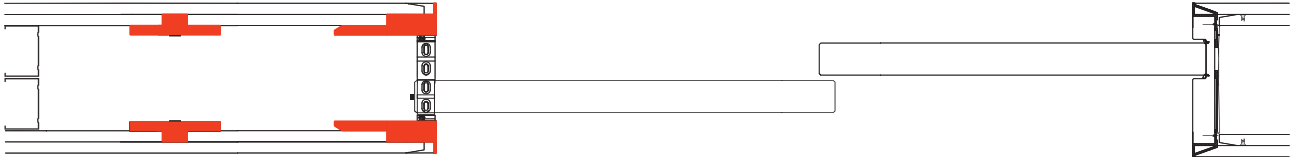
Double doors follow the same build up as a single door. Both panels move independently.

## X5 SYMMETRY



The X5 symmetry allows double doors to slide in a symmetric fashion.

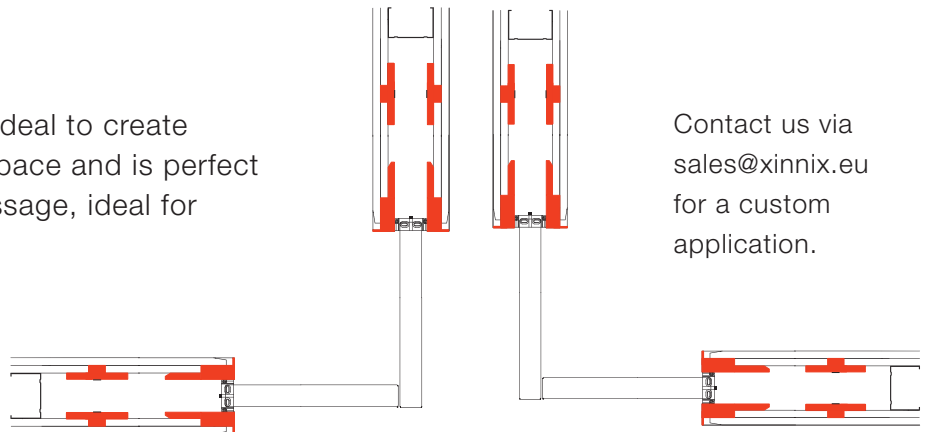
## X5 TELESCOPIC



When the telescopic system is used, both door panels disappear in the same wall. A bigger passage can be created.

## X5 ANGLE

This double door setup is ideal to create some privacy in an open space and is perfect to maintain a spacious passage, ideal for wheelchair access.



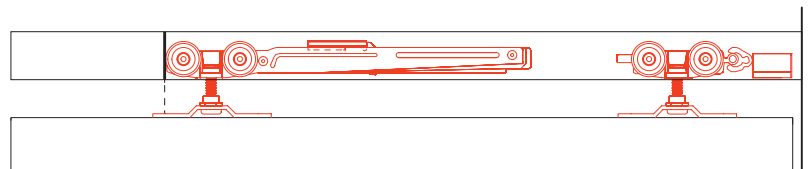
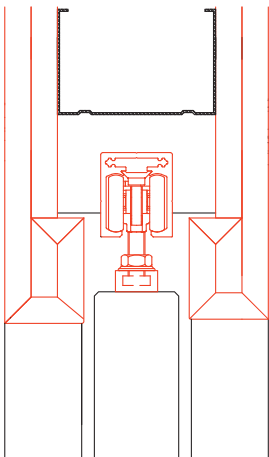
Contact us via [sales@xinnix.eu](mailto:sales@xinnix.eu) for a custom application.





# FINISH

## XINNIX

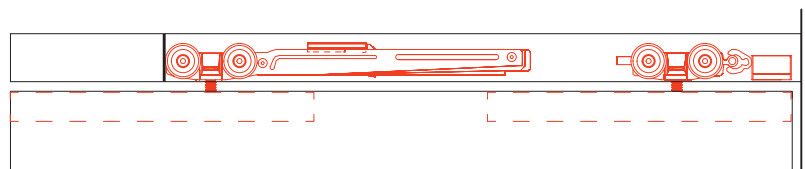
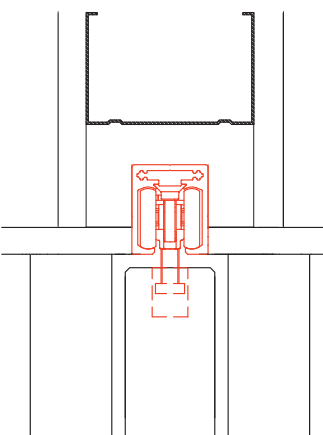


Our range has two finishing types. The 'Xinnix' finish covers up the rail and suspension with the finishing profiles.

# FINISH

---

## PURE

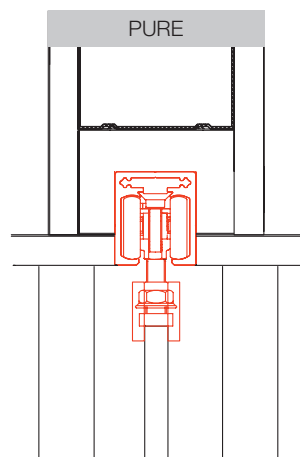
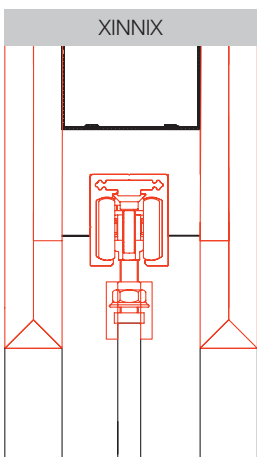


The 'Pure' finish has the suspension integrated in the door leaf. This finish is mainly used in ceiling high solutions where the rail is integrated in the ceiling.

# FINISH

---

## GLASS



Our glass clamps disappear completely out of sight when using our Xinnix-finishing set. When using our Pure finish, the grey clamps are minimally visible.



# DOOR TYPES

## DOOR THICKNESS

### WOODEN DOOR



25-40 mm

Metalstud  
75\*

40-60 mm

Metalstud  
100\*

### GLASS DOOR



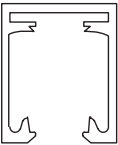
8-12 mm

Metalstud  
50\*\*/75\*

\*width profile wall construction

## DOOR WEIGHT

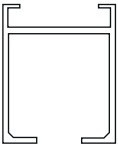
The door weight determines the type of rail used. The X5100 in combination with a soft close is the rail that is most commonly used.



### X5100

Standard rail with 1 soft close.

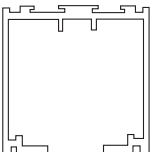
>80 kg MS 75/100  
>120 kg MS 75/100\*\*



### Hawa Porta

Removable track with soft close and soft open. Reveal the door leaf with the push-to-open system.

>100 kg MS 75/100



### X5300

Rail with high load capacity for a door leaf up to 300 kg without soft close.

>300 kg MS 100\*\*

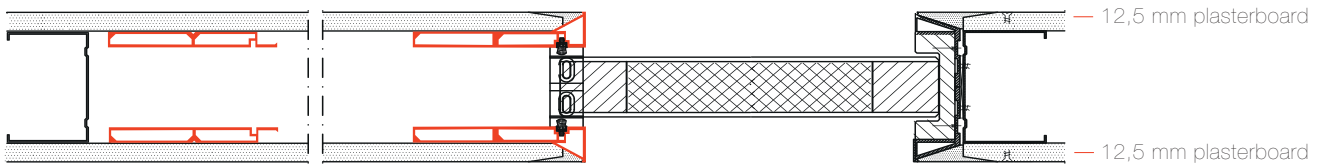
\*\*Without softclose

# WALL FINISH

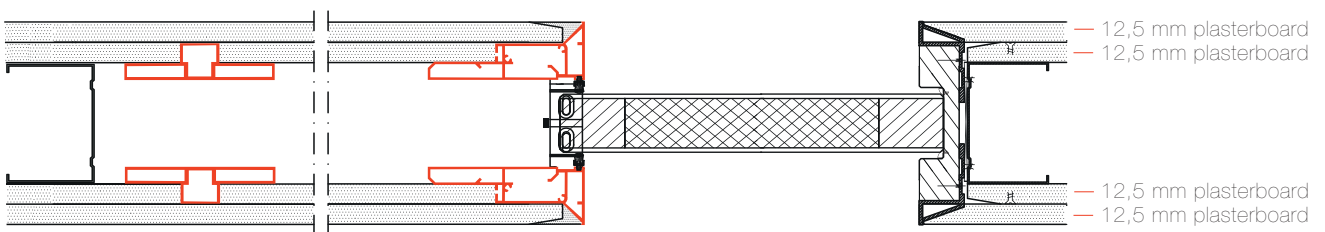
Different types of plating can be used on the pocket systems. Below you can find our range of types and the most common finishes used.

## X5 single plating

Example plating

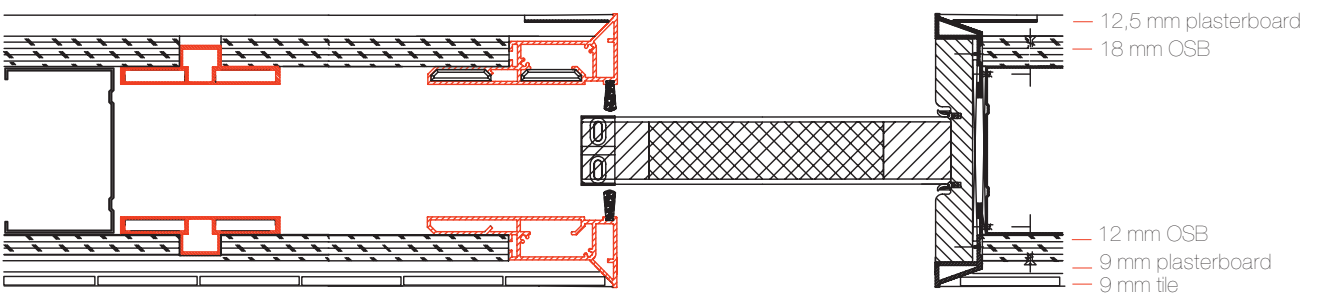
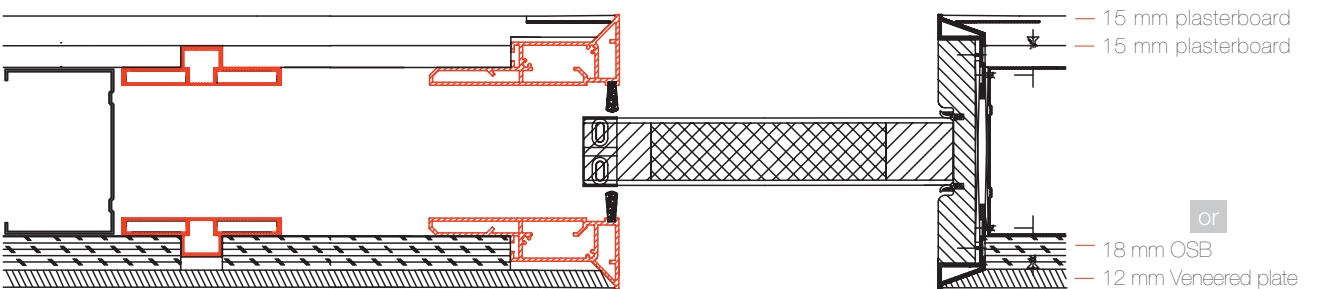


## X5D double plating

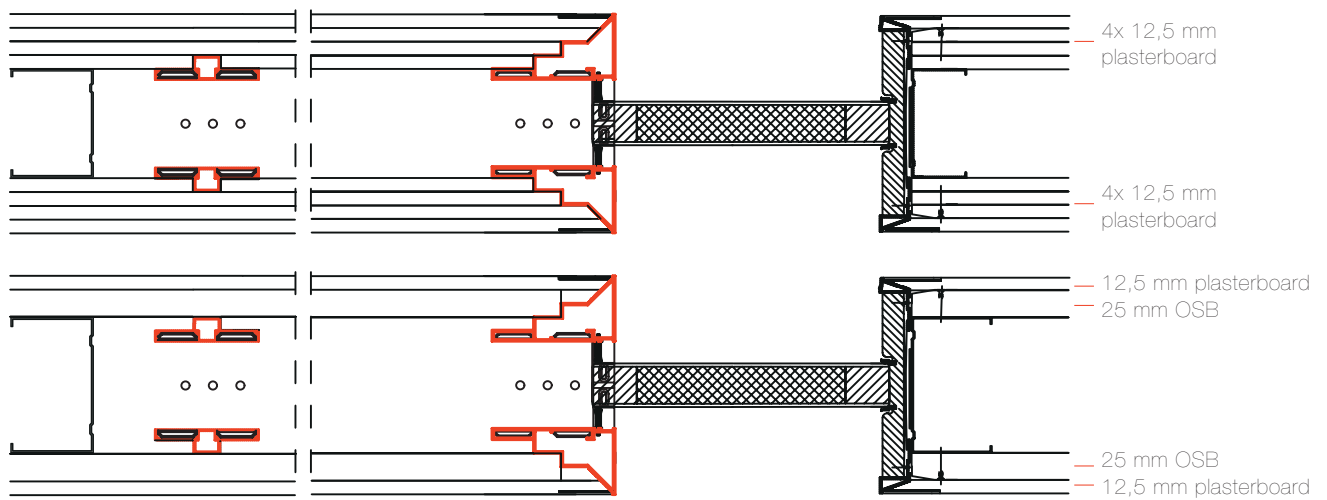


## X5D32 double plating

or



# X5D50







# SPECIAL SOLUTIONS

## SOFT CLOSE + SOFT OPEN



By using two soft close systems you can ensure that your door is decelerated both when opening and closing.

## PUSH TO OPEN



With our X5 pocket sliding door system, your door leaf is fully concealed in the wall. With this push-to-open system, you can reveal the door without any problems by a simple push on the door leaf. This technology is invisibly integrated into the rail.

## EXTENDED SUSPENSION BOLTS



Use our long suspension bolts for a ceiling-high solution without a visible rail.

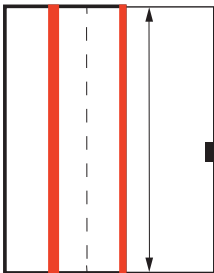


# STOCK

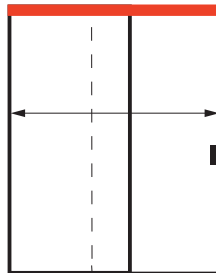
Our standard range are stock items. Our nifty configurator can help you when in doubt.

## 3 BOX SYSTEM

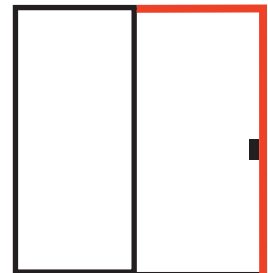
### 1 UPRIGHTS



### 2 BEAM + RAIL + HARDWARE



### 3 FINISH



Notice: This does not include a door leaf or door handle.

Scan here to access our configurator









○● XA-3102 40 mm



# ACCESSORIES



● XA-3100 max. 60 mm 50 x 48 mm



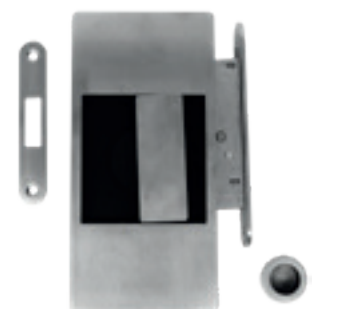
● XA-3300 max. 60 mm 85 x 85 mm



● ● XA-3101 max. 50 mm 50 x 48 m



● ● XA-3301 max. 50 mm 85 x 85 mm



● XA-3105 108 x 90 mm



- XA-3010 10 mm
- XA-3012 12 mm
- XA-3035 35 mm
- ● XA-3040 40 mm
- XA-3050 50 mm
- XA-3060 60 mm



- XA-3310 10 mm
- XA-3335 35 mm
- ● XA-3340 40 mm
- XA-3345 45 mm
- ● XA-3350 50 mm



- ● XA-3772 40 mm
- XA-3777 45 mm
- ● XA-3778 50 mm



- XA-3738 40 mm



- XA-3703                      40 mm
- XA-3704                      43 mm
- XA-3705                      50 mm



● XA-3410

10 mm



A



B

● ● XA-3710

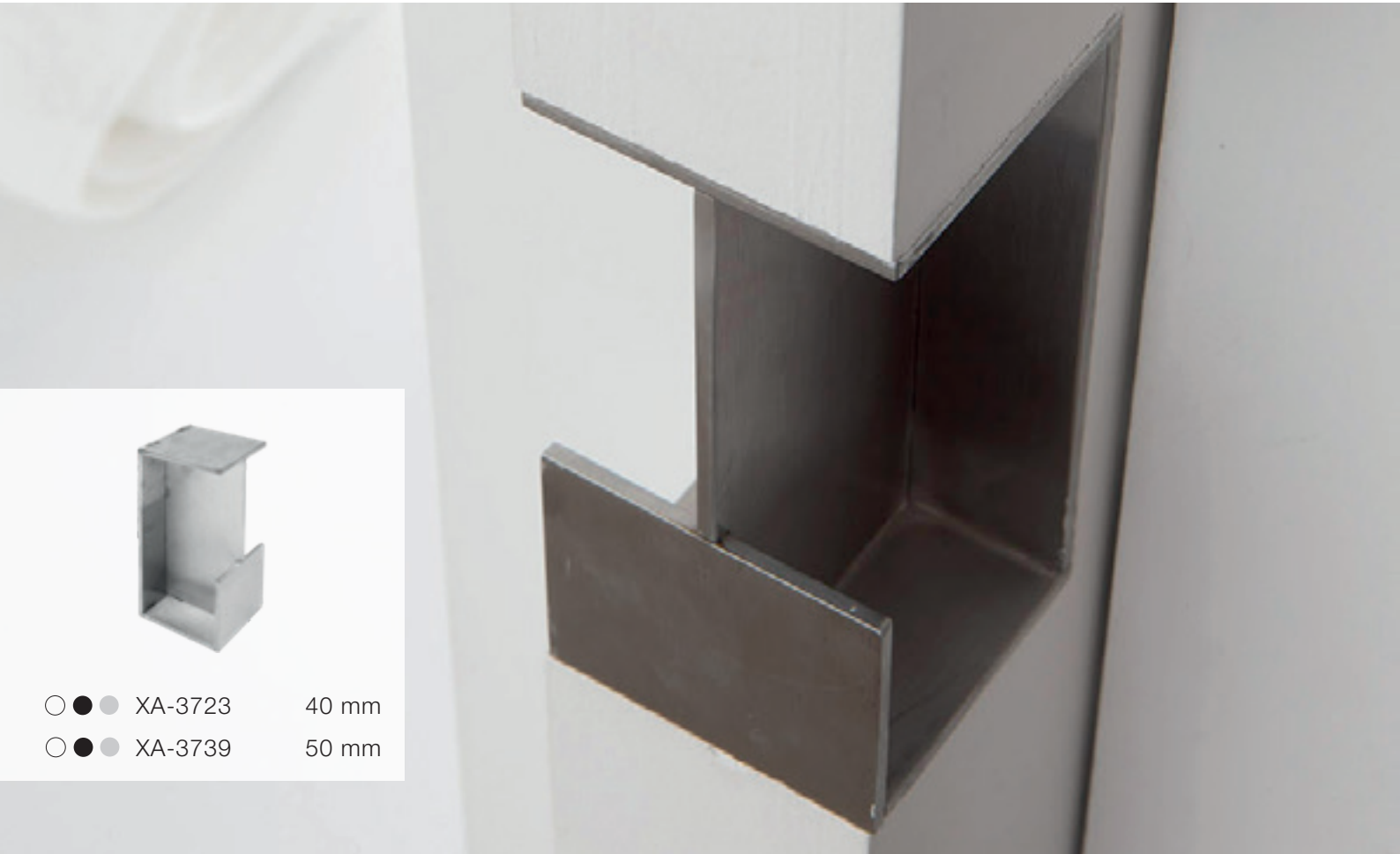
10 mm

A

● ● XA-3711

10 mm

B



○ ● ● XA-3723

40 mm

○ ● ● XA-3739

50 mm





[info@xinnix.eu](mailto:info@xinnix.eu)

[www.xinnix.eu](http://www.xinnix.eu)