

# Putukakaitseruloo

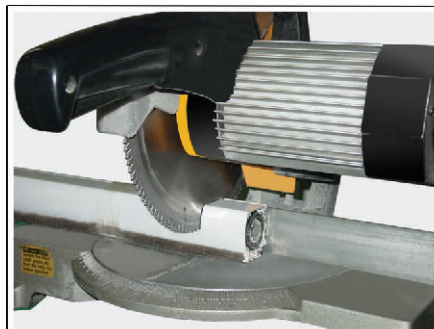


# Paigaldamise eeltöö (välimine või sisemine paigaldus)

## 1. Mõõtmine



## 2. Mõõtudesse lõikamine



## 3. Detailide kokkupanek

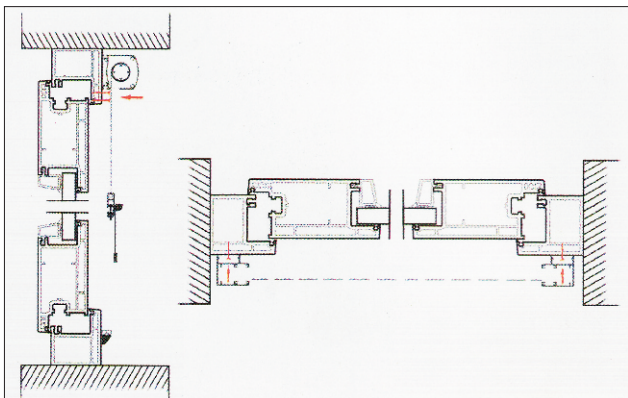


## 4. Ruloo sissetõmbamiskiiruse reguleerimine

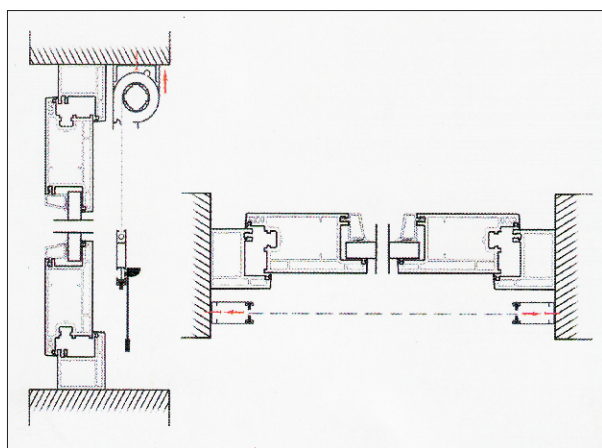




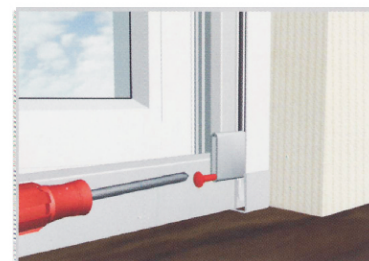
# Paigaldamine aknale



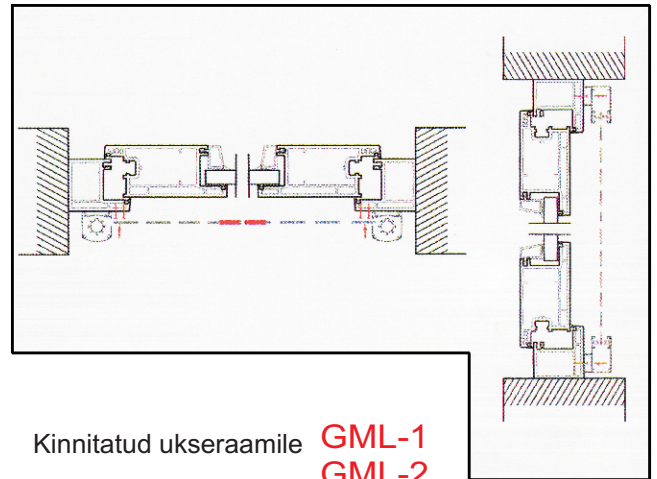
Kinnitatud aknaraamile **YGL-1**



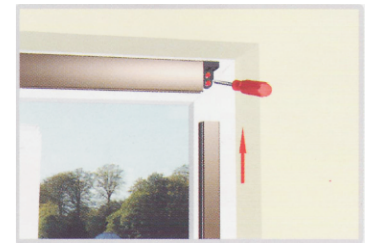
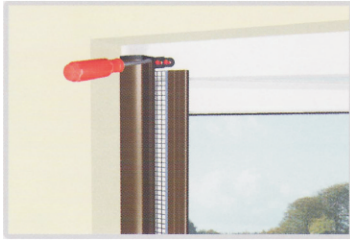
Kinnitatud aknapalele **YSL-3**



# Paigaldamine uksele



Kinnitatud ukseraamile **GML-1**  
**GML-2**



Kinnitatud uksepalele **YML-1**  
**YML-2**

