

CATALOGUE **X5**

SLIDING DOORS CREATING SPACE[S]



FRAMELESS IS MORE

BELGIAN
QUALITY
FACTORY



www.xinnix.eu



[@xinnixdoorsystems](https://www.facebook.com/xinnixdoorsystems)



[xinnix_door_systems](https://www.instagram.com/xinnix_door_systems)



[Xinnix Door Systems](https://www.linkedin.com/company/xinnix-door-systems)



[Xinnix Door Systems](https://www.youtube.com/channel/UC...)



[xdoorsystems](https://www.pinterest.com/xdoorsystems)



| | |
|--------------------|-----|
| Wall build up | P08 |
| Sliding door types | P10 |
| Finish | P14 |
| Door types | P17 |
| Wall finish | P18 |
| Special solutions | P22 |
| Stock | P24 |
| Accessories | P26 |



UNIVERSAL SYSTEMS

The name Xinnix (C nix; see nothing) perfectly describes the result that our door systems achieve, seamless invisible doors.

Do you want to compartmentalise and/or close off a room without losing space? This is possible by using the Xinnix sliding door systems where you can let the door slide completely into the wall.

Measuring up to 3515 mm high and up to 3030 mm wide, this door disappears completely into the wall thickness.

We have solutions for both wooden and glass, single and double doors. Make the sliding door disappear entirely using a ceiling-high solution and create an extra open plan feeling.



| | |
|----------------------------|-----------------------------|
| WIDTH DOOR LEAF | HEIGHT DOOR LEAF |
| max. 3030 mm | max. 3515 mm |

CLASSIFICATION

| | | | | | | | | |
|---|---|---|---|---|---|---|---|---|
| - | 6 | 2 | - | 1 | 0 | - | 1 | 3 |
|---|---|---|---|---|---|---|---|---|

Duration = **6** : 100 000 cycles

Door weight = **2** : 100 kg

Resistance = **3** : 40N

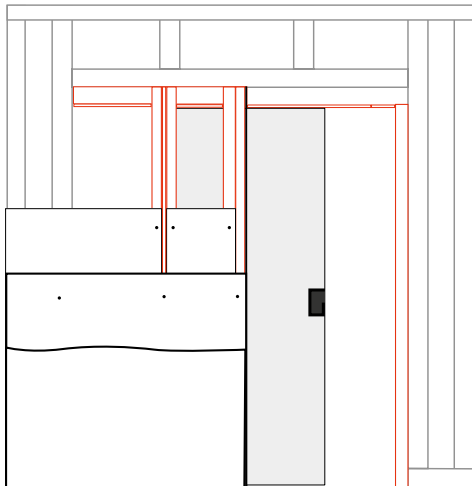




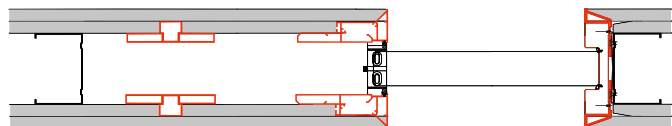
WALL BUILD UP - POCKET



Wesley Bergen



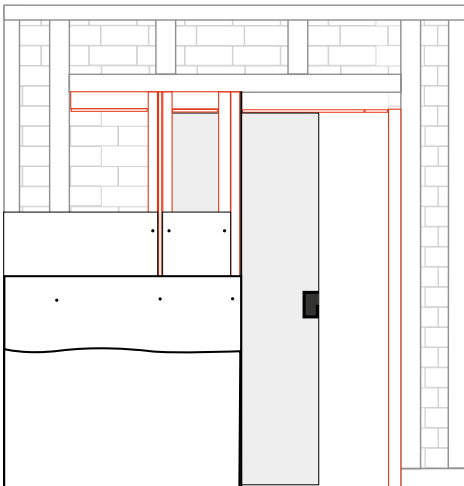
The X5 pocket system allows you to separate two spaces with a pocket sliding door that disappears seamlessly in the wall.



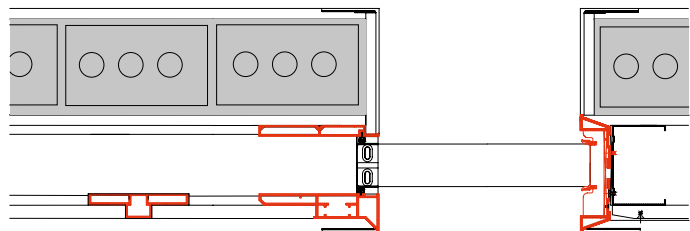
WALL BUILD UP - WALL



Robin van Den Acker - Schellen architecten

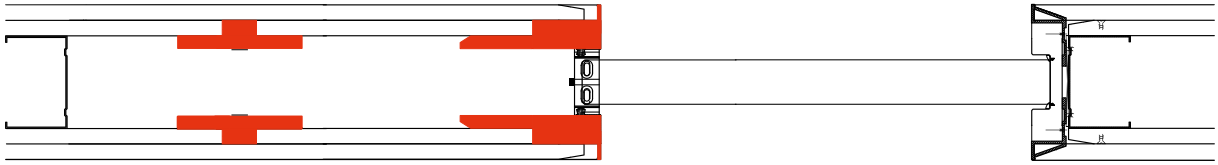


In a renovation where there is already a wall built, our X5 Wall system allows you to make a pocket in which the sliding door disappears.



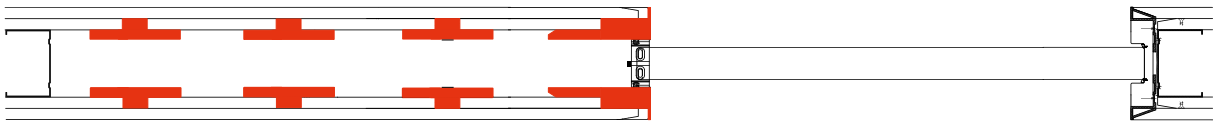
SLIDING DOOR TYPES

X5



Our sliding door disappears in a standard wall thickness so both sides of the wall can be used optimally. With our standard items you can create a desired height (up to 3515 mm, 11'5) and width (1230 mm 4').

X5 XXL



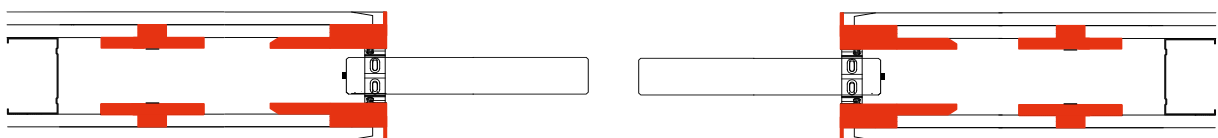
The build up of our X5 XXL consists of the same elements as the standard X5. By using extra sets of uprights a pocket sliding door width up to 3030 mm, 10' can be realised.

X5 DOUBLE



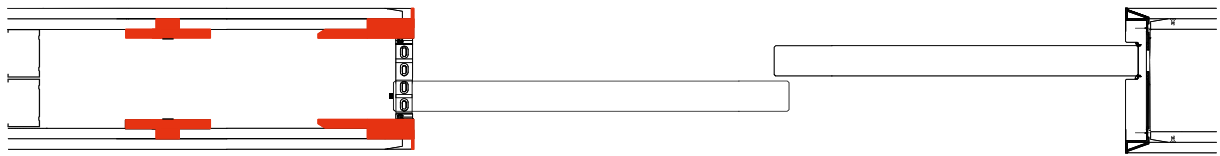
Double doors follow the same build up as a single door. Both panels move independently.

X5 SYMMETRY



The X5 symmetry allows double doors to open and close simultaneously.

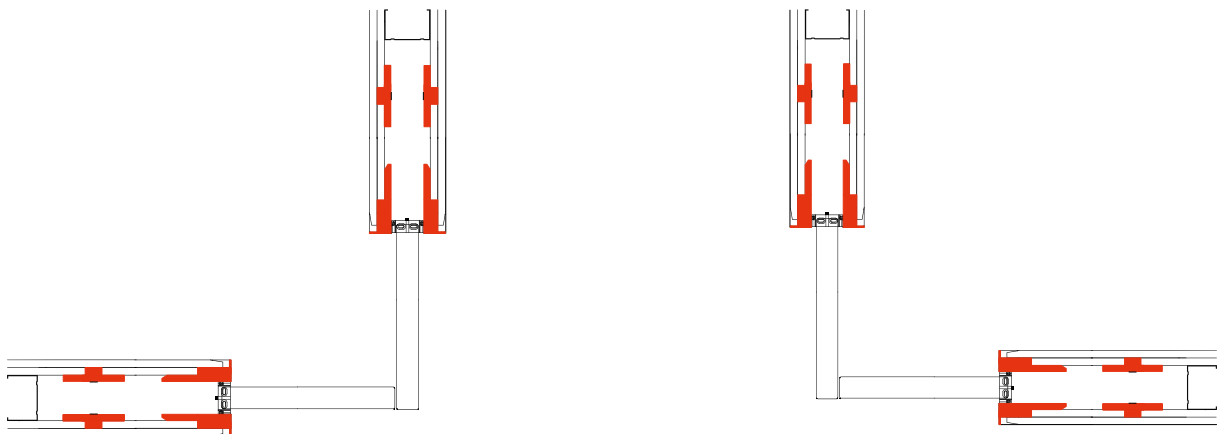
X5 TELESCOPIC



When the telescopic system is used, both door panels disappear in the same wall. A bigger passage can be created.

X5 ANGLE

This double door setup is ideal to create privacy in an open space and is perfect to maintain a spacious passage, ideal for wheelchair access.

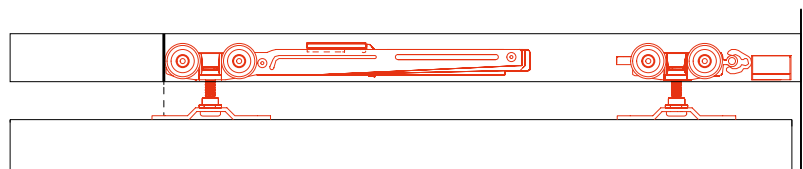
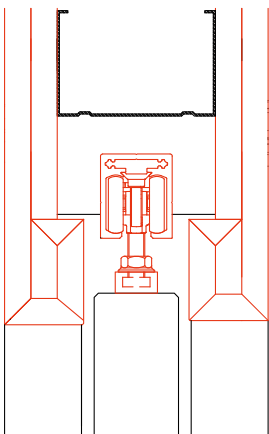


Contact us via sales@xinnix.eu for a custom application.



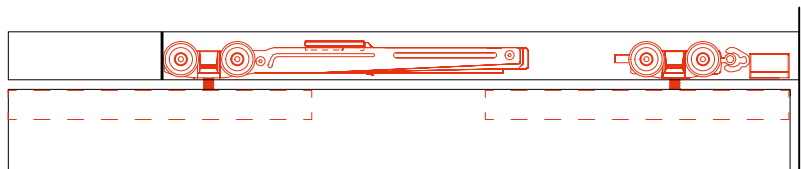
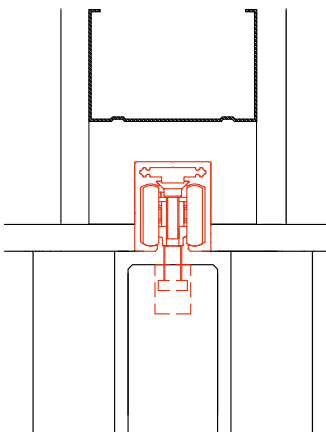


XINNIX FINISH



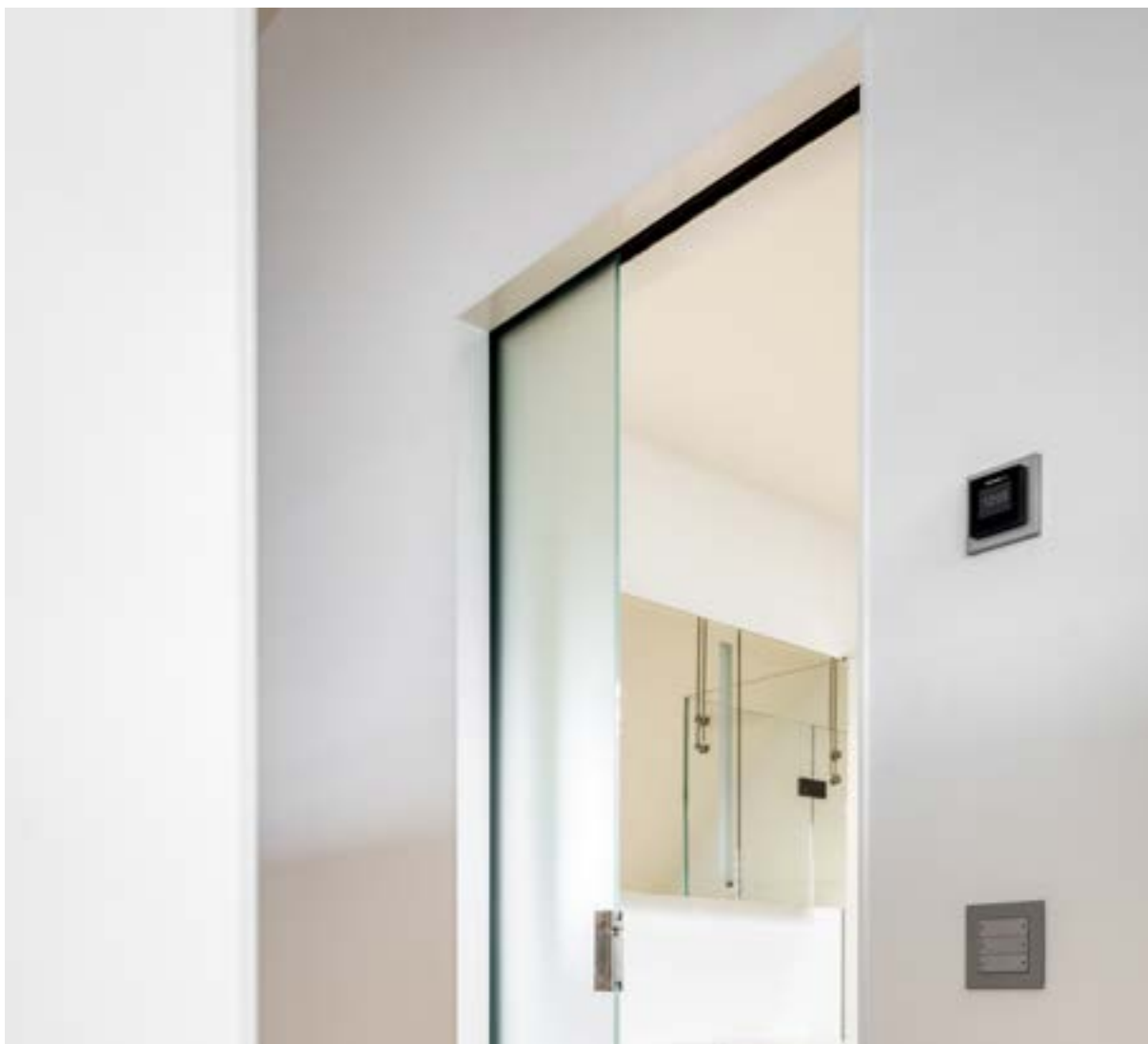
Our range has two finishing types. The 'Xinnix' finish covers up the rail and suspension with the provided finishing profiles.

PURE FINISH

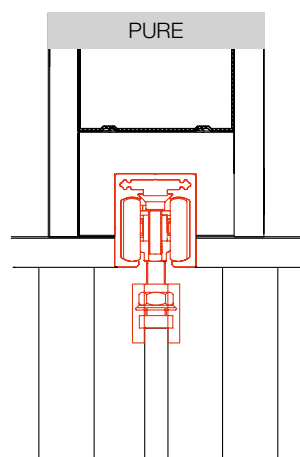
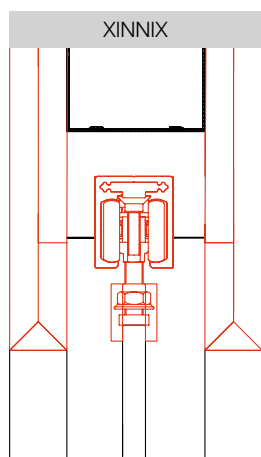


The 'Pure' finish has the suspension integrated in the door leaf. This finish is mainly used in ceiling high solutions where the rail is integrated in the ceiling.

GLASS FINISH



Jurrit van der Waal



Our glass clamps disappear completely out of sight when using our Xinnix-finishing set. When using our Pure finish, the grey clamps are minimally visible.

DOOR TYPES

DOOR THICKNESS

WOODEN DOOR



25-40 mm

Metalstud
75*

40-60 mm

Metalstud
100*

GLASS DOOR



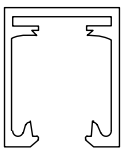
8-12 mm

Metalstud
50**/75*

*width profile wall construction

DOOR WEIGHT

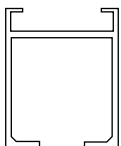
The door weight determines the type of rail used. In general, the X5100 in combination with one soft close is most often used for doors up to 80 kg.



X5100

Standard rail with 1 soft close.

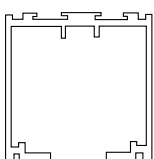
>80 kg MS 75/100
>120 kg MS 75/100**



Hawa Porta

Removable track with soft close and soft open. Reveal the door leaf with the push-to-open system.

>100 kg MS 75/100



X5300

Rail with high load capacity for a door leaf up to 300 kg without soft close.

>300 kg MS 100**

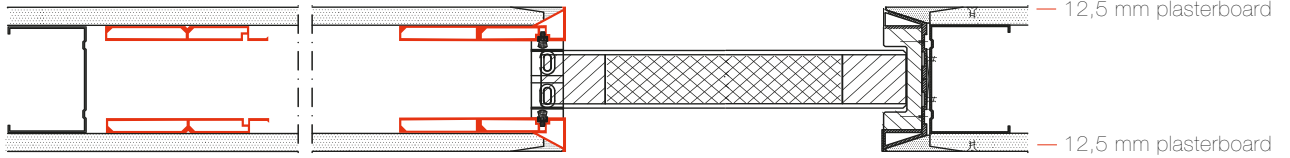
**Without soft close

WALL FINISH

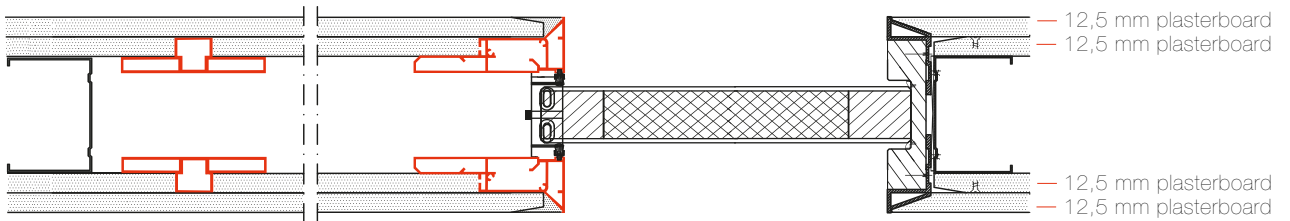
Different types of plating can be used on the pocket systems. Below you can find our range of types and the most commonly used finishes.

Example plating

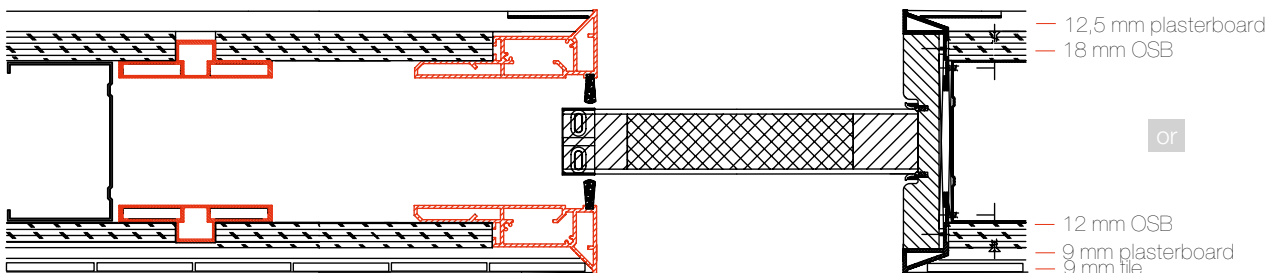
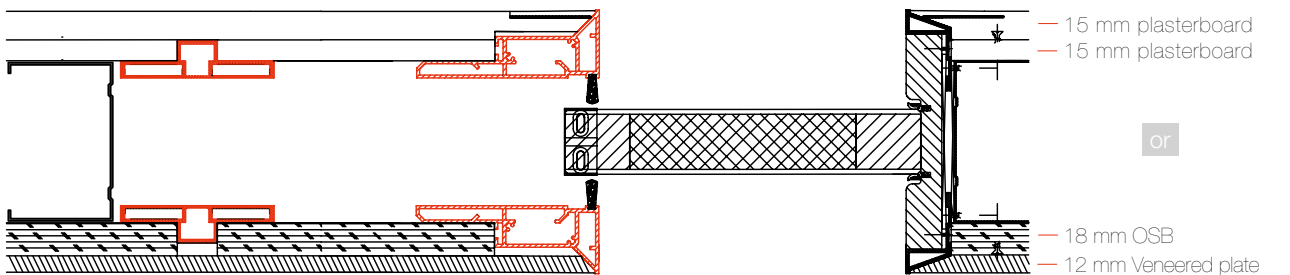
X5 single plating up to 12.5 mm thickness



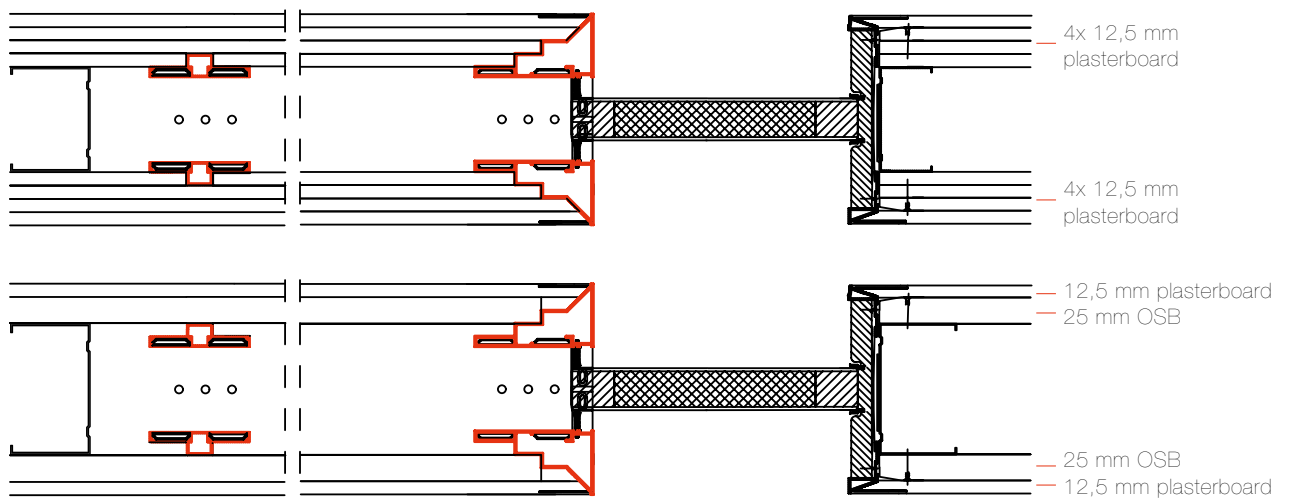
X5D double plating up to 25 mm thickness



X5D32 double plating up to 32 mm thickness



X5D50 plating up to 50 mm thickness







SPECIAL SOLUTIONS

SOFT CLOSE + SOFT OPEN



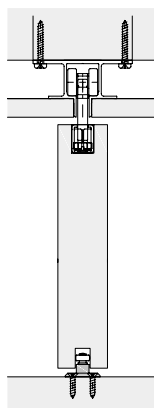
By using two soft close systems you can ensure that your door is decelerated both when opening and closing.

PUSH TO OPEN



With our X5 pocket sliding door system, your door leaf is fully concealed in the wall. With this push-to-open system, you can reveal the door without any problems by a simple push on the door leaf. This technology is invisibly integrated into the rail.

EXTENDED SUSPENSION BOLTS



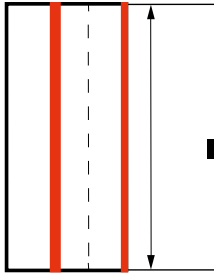
Use our long suspension bolts for a ceiling-high solution without a visible rail.



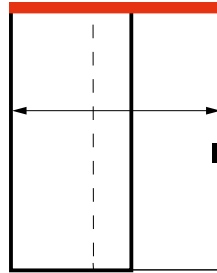
STOCK

3 BOX SYSTEM

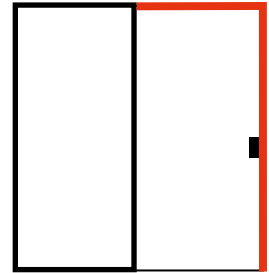
1 UPRIGHTS



2 BEAM + RAIL + HARDWARE



3 FINISH



Notice: This does not include a door leaf or door handle.

Our standard range are stock items.
Our configurator can help you when in doubt.
Scan here to access the configurator.







○● XA-3102 40 mm



ACCESSORIES



● XA-3100 max. 60 mm Ø58 mm



● XA-3300 max. 60 mm 85 x 85 mm



● ● XA-3101 max. 50 mm Ø57 mm



● ● XA-3301 max. 50 mm 55 x 55 mm



● XA-3105 108 x 90 mm



- XA-3010 10 mm
- XA-3012 12 mm
- XA-3035 35 mm
- ● XA-3040 40 mm
- XA-3050 50 mm
- XA-3060 60 mm



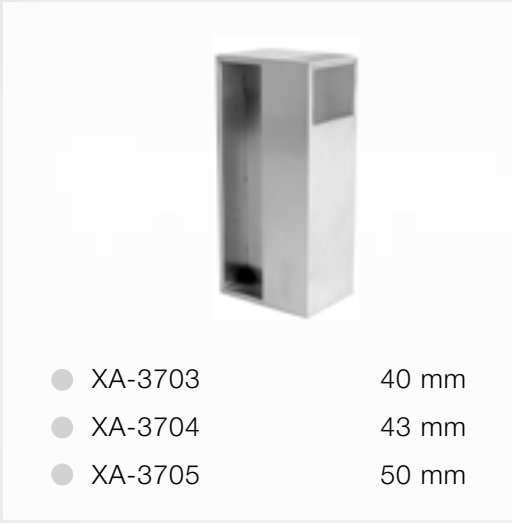
- XA-3335 35 mm
- ● XA-3340 40 mm
- XA-3345 45 mm
- ● XA-3350 50 mm



- XA-3772 40 mm
- XA-3777 45 mm
- ● XA-3778 50 mm



- XA-3738 40 mm



- XA-3703 40 mm
- XA-3704 43 mm
- XA-3705 50 mm



● XA-3410

10 mm



● ● XA-3710

10 mm

A

● ● XA-3711

10 mm

B

A

B



○ ● ● XA-3723 40 mm

○ ● ● XA-3739 50 mm



info@xinnix.eu

www.xinnix.eu